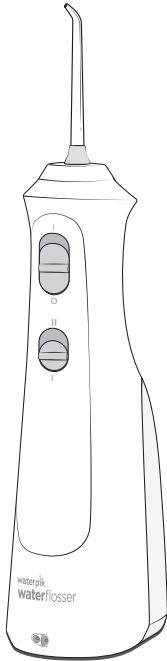


waterpik®



Waterpik® Water Flosser Model WF-13UK

www.waterpik.co.uk

samcooper**design**

DO NOT PRINT

DATE: 07.22.2022
CLIENT: WATERPIK

FILENAME: 20031970-FAA_WF-13UK_Series_IM_r4.indd
DESCRIPTION: WF-13 Instruction Manual
LANGUAGES: 1 [Eng]
FILE TYPE: Adobe InDesign CC
SCD JOB# / PREPARED BY: 22WPOH7379 / BT
CLIENT ROUND: 4

SCALE: 100%
UPC: N/A
SIZE: Flat: 14.0" x 4.5"; Folded: 7.0" x 4.5"
FORM NUMBER: 20031970-F AA
INK: Process Black
NOTES:

IMPORTANT SAFEGUARDS

- This product is for household use.

When using electrical products, especially when children are present, basic safety precautions should always be followed, including the following:

READ ALL INSTRUCTIONS BEFORE USING.

DANGER:

To reduce the risk of electrocution:

- Do not handle the user supplied USB charger with wet hands.
- Do not place or drop the user supplied USB charger into water or other liquid.
- Do not use this product while bathing.

- Do not place or store this product where it can fall or be pulled into a tub or sink.
- Do not reach for this product if it has fallen into water. Unplug from electrical outlet immediately.
- Check the charging cord and user supplied USB charger for damage before the first use and during the life of the product.

WARNING:

To reduce the risk of burns, electrocution, fire, or injury to persons:

- Use this product only as indicated in these instructions or as recommended by your dental professional.
- A user supplied USB charger with the following specifications is required to charge this product: USB Type-A, Output: 5.0 VDC, 1.0 A.
- Do not plug this device into a voltage system that is different from the voltage system specified on the device or charger.

- Keep the charging cord and user supplied USB charger away from heated surfaces.
- Do not use the Water Flosser for more than 5 minutes in each two hour period.
- Do not direct water under the tongue, into the ear, nose or other delicate areas. This product is capable of producing pressures that may cause serious damage in these areas. The potentially deadly amoeba, *Naegleria fowleri*, may be present in some tap water or unchlorinated well water and may be fatal if directed into the nose or ear.
- If your physician advised you to receive antibiotic premedication before dental procedures, you should consult your dental professional before using this product or any other oral hygiene aid.
- Fill reservoir with warm water or other dental professional recommended solutions only.
- Do not use iodine, saline (salt solution), or water insoluble concentrated essential oils in this product. Use of these can reduce performance and will shorten the life of the product.

- Only use tips and accessories that are recommended by Water Pik, Inc.
- If the Pik Pocket™ tip (not included in all models) separates from the shaft for any reason, discard tip and shaft and replace with a new Pik Pocket™ tip.
- Do not drop or insert any foreign object into any opening on the product.
- Do not use this product outdoors or operate where aerosol (spray) products are being used or where oxygen is being administered.
- Remove any oral jewelry prior to use of this product.
- Do not use if you have an open wound on your tongue or in your mouth.
- There are no consumer serviceable parts in this product and it does not require maintenance.

WARNING: (Continued)

- This appliance can be used by children aged from 8 years and above and persons with reduced physical, sensory or mental capabilities or lack of experience and knowledge if they have been given supervision or instruction concerning use of the appliance in a safe way and understand the hazards involved.
- Children shall not play with the appliance. Cleaning and user maintenance shall not be made by children without supervision.


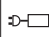











- If the supply cord is damaged, it must be replaced by a special cord or assembly available from the manufacturer or its service agent.
- Do not use this product if it has a damaged cord or plug, if it is not working properly, if it has been dropped or damaged, or dropped into any liquid. Contact Water Pik, Inc. at +44 (0) 333 123 5677 or visit www.waterpik.co.uk.

**SAVE THESE
INSTRUCTIONS.**

Product Description	7
Getting Started	8
Cleaning and Troubleshooting Your Waterpik® Water Flosser	10
Battery Removal	11
Limited Two Year Warranty	12

SYMBOLS

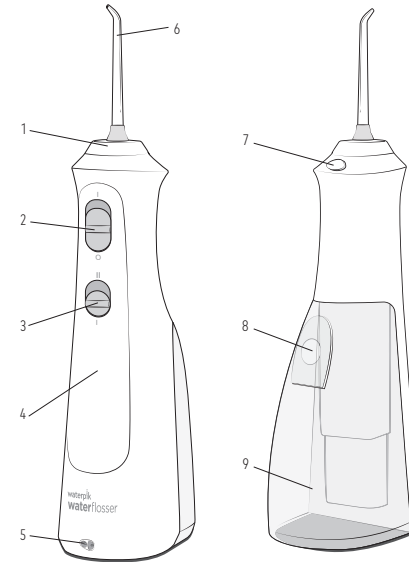
The following symbols may appear on your product and/or packaging. Some of these symbols may not be relevant in your region and are listed for information purposes only.

Symbol	Definition	Symbol	Definition	Symbol	Definition	Symbol	Definition
	Refer to instruction manual		Detachable Power Supply		Do not use this device in a shower, bathtub and do not immerse in any liquid.		Regulatory Compliance Mark
	Manufacturer		Direct Current (DC) Voltage		Authorized Representative in the European Community		Separate collection for waste electrical and electronic equipment.
IPX7 or IPX4	Ingress Protection Code		Alternating Current (AC) Voltage		CE marking of conformity		
	IEC Class II Equipment		Do not immerse this device in any liquid.		UK Conformity Assessed		

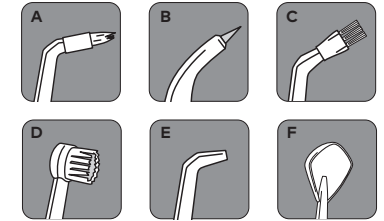
1. Tip rotator
2. Power switch
3. Pressure control
4. Power handle
5. Charger inlet
6. Tip
7. Tip eject button
8. Flip top water inlet
9. Reservoir



USB Charging Cord
20031307-1 White
20031307-2 Black



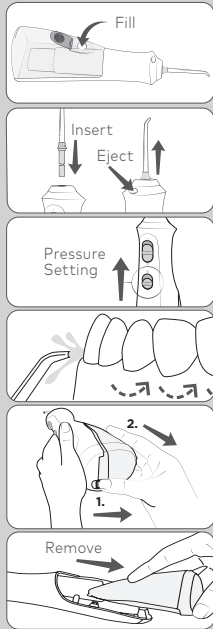
NOT ALL TIPS INCLUDED IN ALL MODELS



*Replace Every 3 months **Replace Every 6 months
Replacement/attachments may be purchased directly from Water Pik, Inc. UK Customer Service Centre at +44 (0) 333 123 5677 or from www.waterpik.co.uk. To find detailed information about tips, other accessories, and product usage please visit our website at www.waterpik.co.uk.

TIPS

- | | |
|--|--|
| A. Orthodontic Tip*
- Braces/General Use | D. Toothbrush Tip*
- General Use |
| B. Pik Pocket™ Tip*
- Periodontal Pockets/
Furcations | E. Classic Jet Tip**
- General Use |
| C. Plaque Seeker™ Tip*
- Implants/Crowns/
Bridges/Retainers/
General Use | F. Tongue Cleaner**
- Fresher Breath |



Charging Unit Prior to First Use

Charge Unit For 24 Hours Prior To First Use. A user supplied USB charger with the following specifications is required to charge this product: USB Type-A, Rated Output: 5.0 VDC, 1.0 A. Plug the USB charger into a wall outlet and connect the charging cord to the unit. Make sure you slide the switch into the OFF (O) position before charging. The unit will not charge if the switch is in the ON (I) position. See "Cleaning and Troubleshooting Your Waterpik® Water Flosser" for guidance on how to look after your battery.

Filling the Reservoir

Lift flip top on reservoir and fill the reservoir with lukewarm water.

Inserting and Removing Tips

Insert tip into the center of the tip rotator at the top of the Water Flosser handle. The colored ring will be flush with the end of the knob if the tip is correctly locked into place. To remove the tip from the handle, press the tip eject button and pull tip from the handle.

CAUTION: DO NOT PRESS TIP EJECT BUTTON WHILE UNIT IS RUNNING.

Adjusting the Pressure Setting

You can adjust the pressure setting on your Water Flosser by simply sliding the pressure switch on the handle.

Recommended Technique

Lean low over sink and place the tip in mouth. Aim the tip toward teeth, and turn the unit ON (I).

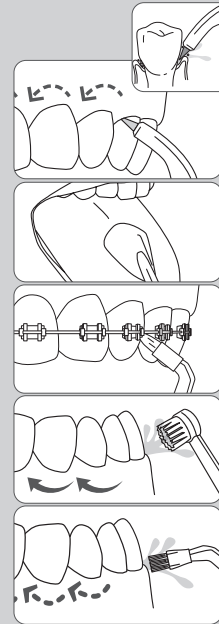
For best results, start with the back teeth and work toward the front teeth. Glide tip along gumline and pause briefly between teeth. Continue until you have cleaned the inside and outside of both the upper and lower teeth.

Direct the jet stream at a 90-degree angle to your gumline. **Slightly close lips to avoid splashing** but allow water to flow freely from mouth into the sink. Keep unit upright during use for best results.

When Finished

Turn the unit OFF (O). Empty any liquid left in the reservoir. If desired, the reservoir may be removed from the power handle by sliding the reservoir release latch to the unlock position(1) and then sliding the reservoir down towards the base of the unit(2).

To replace the reservoir on the power handle, simply slide it up towards the top of the unit. The reservoir will snap into place when fully engaged.



NOTE: NOT ALL TIPS INCLUDED WITH ALL MODELS.

TIP USAGE

Pik Pocket™ Tip

The Pik Pocket™ tip is specifically designed to deliver water or anti-bacterial solutions deep into periodontal pockets.

To use the Pik Pocket™ tip, set the unit to the lowest pressure setting. Place the soft tip against a tooth at a 45-degree angle and gently place the tip under the gumline, into the pocket.

Tongue Cleaner Tip

Set to lowest pressure setting, place tip in the center/middle of your tongue about half way back. Pull forward with light pressure. Increase pressure as you prefer.

Orthodontic Tip

To use the orthodontic tip, gently glide tip along gumline, pausing briefly to lightly brush area between teeth and all around orthodontic bracket, before proceeding to the next tooth.

Toothbrush Tip

Place the toothbrush tip in mouth with the brush head on the tooth at the gumline. The toothbrush tip can be used with or without toothpaste.

Using a light pressure (bristles should not bend) massage the brush back and forth with very short strokes – much like you would with a manual toothbrush.

Plaque Seeker™ Tip

To use the Plaque Seeker™ tip, place the tip close to the teeth so that the bristles are gently touching the teeth. Gently glide tip along gumline, pausing briefly between teeth to gently brush and allow the water to flow between the teeth.

Using Mouthwash and Other Solutions

Your Waterpik® Water Flosser can be used to deliver mouthwash and antibacterial solutions. After using any special solution, rinse unit to prevent clogging by partially filling reservoir with warm water and running unit with tip pointed into sink until unit is empty.

Cleaning

Never immerse unit in water. Before cleaning, unplug from the electrical outlet. Clean the product when necessary by using a soft cloth and mild non-abrasive cleanser to wipe exterior.

The water reservoir is removable for easy cleaning and is top rack dishwasher safe. It is recommended that the reservoir is removed and cleaned weekly.

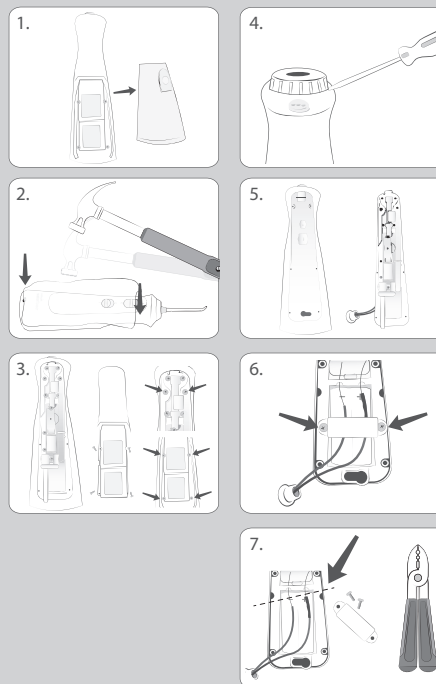
Removing Hard Water Deposits

Add 1 tablespoon of white vinegar to a full reservoir of warm water. Point the handle and tip into sink. Turn unit ON (I) and run until reservoir is empty. Rinse by repeating with a full reservoir of clean warm water.

Battery Care and Disposal

The unit will not charge if the switch is in the ON(I) position. If you use your Water Flosser once a day or less, it is recommended you charge it overnight, once a week. If you use it twice a day or more, charge the unit more frequently. Do not run the batteries down completely as this may shorten the lifespan of the batteries and will require charging the unit for 24 hours to obtain a full charge.

If the Water Flosser is to be stored for an extended period of time (six months or more), be sure to fully charge it prior to storage. The unit contains a Nickel Metal Hydride battery. At the end of the battery life, please recycle the unit at your nearest recycle center per local or state requirements.



Battery Removal

The product contains battery and/or recyclable electronic waste. In order to protect the environment, please do not dispose along with household waste. When battery life ends, please dispose or recycle according to local administrative regulations.

Please contact local waste administrative department for any questions.

If you intend to dispose the battery on your own, for example, for WP-400 models, please discharge battery fully before removal and follow below steps to remove battery:

1. Power off the device, pull the reservoir release latch and take out the reservoir.
2. Remove the rear cover by breaking the joints at the handle (both sides) and top cover.
3. Remove 6 screws to remove chassis from unit to gain access to battery.
4. Remove tip rotator by prying it off with a flat blade screwdriver.
5. Remove chassis from Unit.
6. Flip chassis over to expose battery. Remove two screws.
7. Cut these two wires and pry battery out of chassis.

The removed battery should be disposed safely by special recycling center.

WARNING: The battery of this product is not replaceable. Please do not disassemble the product unless you want to dispose it. Otherwise the warranty service will be void.

Service Maintenance

Waterpik® Water Flossers have no consumer serviceable electrical items and do not require routine service maintenance. For all your service needs please call the Water Pik, Inc. UK Customer Service Centre at +44 (0) 333 123 5677. Some replacement parts and accessories for the Water Flosser are also available at www.waterpik.co.uk. For questions or problems please call the customer service centre before returning the product.

Refer to the serial and model numbers in all correspondence. These numbers are located on the back of the handle and bottom of the reservoir respectively.

Still have questions? Go to www.waterpik.co.uk.

Warranty

Water Pik, Inc. warrants to the original consumer of this new product that it is free from defects in materials and workmanship for 2 years from the date of purchase. Consumer will be required to submit the original purchase receipt as proof of purchase date and if requested, the entire product, to support a warranty claim. Water Pik, Inc. will replace at its discretion the product, which in its opinion is defective, provided the product has not been abused, misused, altered or damaged after purchase, was used according to instructions, and was used only with accessories or consumable parts approved by Water Pik, Inc. This limited warranty excludes accessories or consumable parts such as tips, etc.

This warranty gives you specific legal rights. You may also have other rights that vary, depending on the law in your place of residence.

waterpik®

**Water Pik, Inc., a subsidiary
of Church & Dwight Co., Inc.**
1730 East Prospect Road
Fort Collins, CO 80553-0001 USA
844-821-4873
www.waterpik.com



EC REP

CE

SOFIBEL SAS
110-114 Rue Victor Hugo
92686 Levallois-Perret
Cedex-France

**UK
CA**

UK Responsible Person
Church & Dwight UK Ltd.,
Wear Bay Road,
Folkestone, Kent CT19 6PG.
UK: 0800 121 6080

Designed and tested in the U.S.A.

Form No. 20031970-F AA
©2022 Water Pik, Inc.