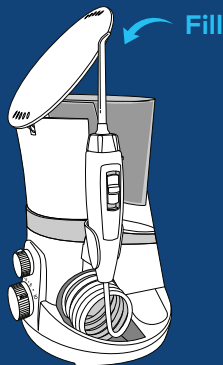


waterpik® waterflosser®

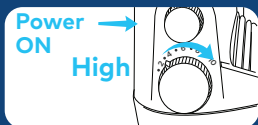
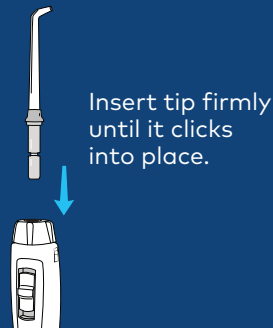
QUICK START GUIDE

WP-800 Series

1 First Use



Fill reservoir with warm water and replace it firmly on the base.



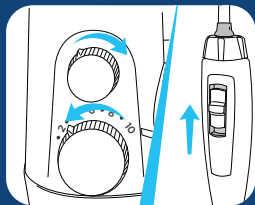
Turn pressure to HIGH, point tip into sink, turn power and water switches ON until water flows. Turn OFF.

waterpik® waterflosser®

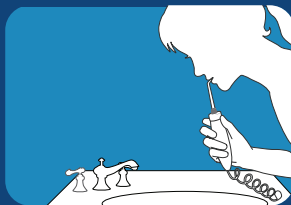
QUICK START GUIDE

WP-800 Series

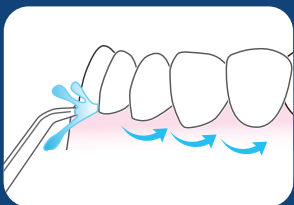
2 Water Floss



Turn pressure to low. With water switch in OFF position, place tip in mouth. Turn Power ON. Turn water switch ON.



Lean over sink. Close lips enough to prevent splashing, while still allowing water to flow from mouth into sink. Increase pressure to your liking.



Aim water at the gumline at a 90 degree angle. Follow the gumline and pause briefly between teeth.

TO AVOID MESS: KEEP TIP IN MOUTH WHILE UNIT IS ON.