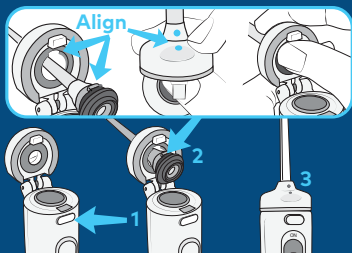


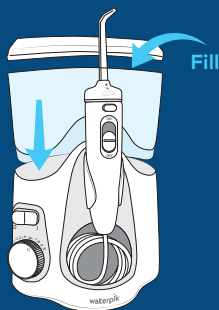
QUICK START GUIDE

Model WF-06

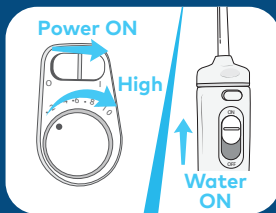
1 Unit Prep (First time use only)



A. Press button to open flip top.¹ Insert tip through top, align notches on tip and handle (dots on tip and flip top will align), press firmly to click tip into place.² Close flip top.³



B. Fill reservoir with warm water and replace it firmly on the base.



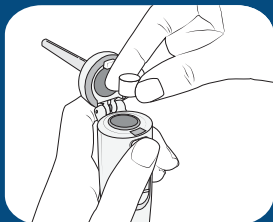
To Prime Unit

C. Turn pressure to high, point tip into sink, turn power and water switches ON until water flows. Turn power and water OFF.

QUICK START GUIDE

Model WF-06

2 Water Floss



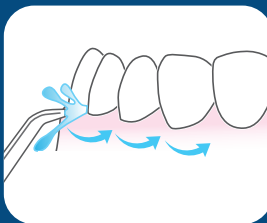
A. Load tablet into handle. Close flip top. Turn pressure to low.



B. With water switch in OFF position, place tip in mouth. Turn Power ON. Lean over sink.



C. Turn water switch to ON position. Close lips enough to prevent splashing, while still allowing water to flow from mouth into sink. Increase pressure to your liking.



D. Aim water at the gumline at a 90 degree angle. Follow the gumline and pause briefly between teeth.

TO AVOID MESS: KEEP TIP IN MOUTH WHILE UNIT IS ON.