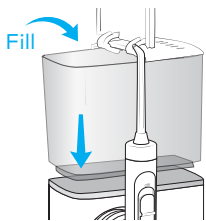


waterpik® waterflosser®

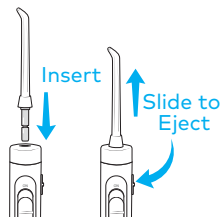
QUICK START GUIDE

Models CC-01 & CC-02

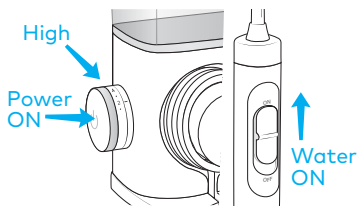
1 Getting Started (First time use only)



Fill reservoir with warm water and replace it firmly on the base.



Insert tip firmly until it clicks into place.



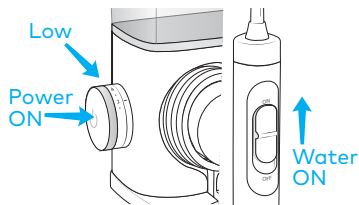
Turn pressure to high, point tip into sink. Push power on and slide water switch on. Leave on until water flows, then turn off.

waterpik® waterflosser®

QUICK START GUIDE

Models CC-01 & CC-02

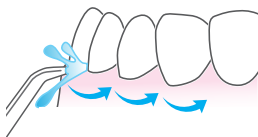
2 Water Floss



Start on low pressure.
Turn power and water on.
Increase pressure to your
liking.



Close lips enough to
prevent splashing, while
still allowing water to flow
from mouth into the sink.



Aim water at the gumline at a
90° angle. Follow the gumline
and pause briefly between teeth.

TO AVOID MESS: PLACE THE TIP IN YOUR MOUTH BEFORE TURNING WATER ON