

waterpik®

SONIC-FUSION®

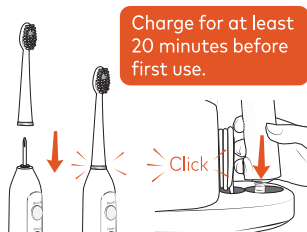
QUICK START GUIDE Model SF-01 | SF-02

Visit

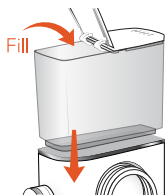
Waterpik.co.uk/WelcomeSF

to watch How To Video

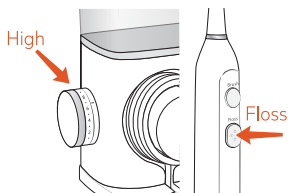
Getting Started (First time use only)



Place flossing brush head firmly into place. Press the power handle onto hose attachment.



Fill reservoir with warm water and replace it firmly on the base.



Prime Unit

Turn pressure to high, point tip into sink and press the FLOSS button until water flows. Turn off.

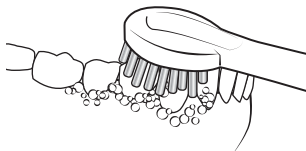
waterpik®

SONIC-FUSION®

QUICK START GUIDE Model SF-01 | SF-02

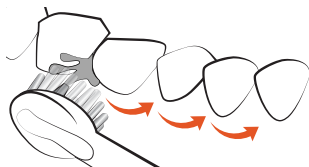
Visit
Waterpik.co.uk/WelcomeSF
to watch How To Video

3 Modes



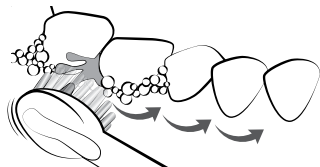
Brush

Press BRUSH button, use light pressure and clean all tooth surfaces.



Floss

Press FLOSS button, keep lips partially closed to allow water to flow into sink.



Brush + Floss

Press BRUSH button, then press FLOSS button.