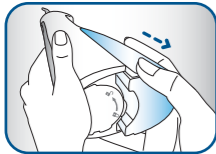


QUICK START GUIDE

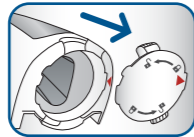
Review full instruction book prior to first use

1 FIRST USE

1. Remove reservoir.



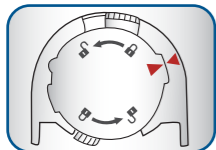
2. To remove battery door, twist, and pull.



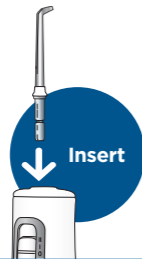
3. Insert 3 AA batteries. Included



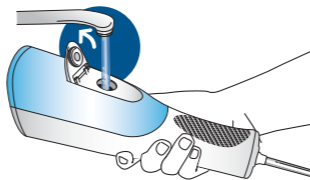
4. To replace battery door, line-up arrows, push and twist.



5. Insert tip firmly until it clicks into place.



6. Fill reservoir with warm water.



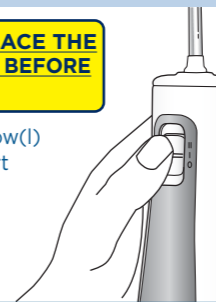
QUICK START GUIDE

Review full instruction book prior to first use

2 START WATER FLOSSING

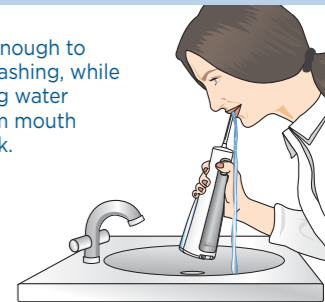
TO AVOID MESS: PLACE THE TIP IN YOUR MOUTH BEFORE TURNING UNIT ON

Slide power switch to low(I) or high(II) position. Start with lowest setting and increase to your liking.



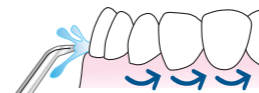
3 LEAN OVER SINK

Close lips enough to prevent splashing, while still allowing water to flow from mouth into the sink.



4 TECHNIQUE

Aim water at the gumline at a 90° angle. Follow the gumline and pause briefly between teeth.



5 REGISTER

Register your product and receive over £45 in savings.
waterpik.co.uk/registration