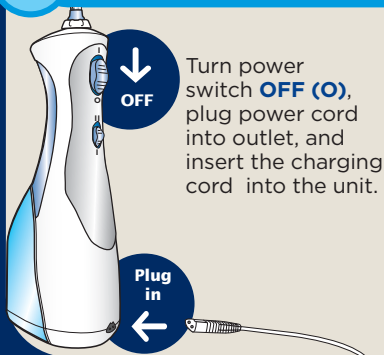


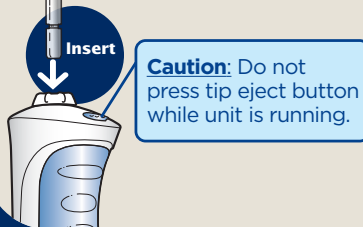
QUICK START GUIDE

1 Charge Unit for 24 Hours Prior to First Use.

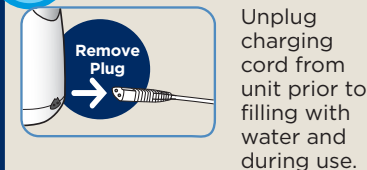


2 Insert Tip:

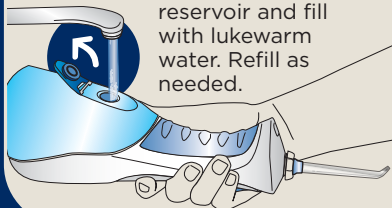
Select the appropriate tip and insert into the unit. Press firmly until the tip clicks into place.



3 Fill the Reservoir:



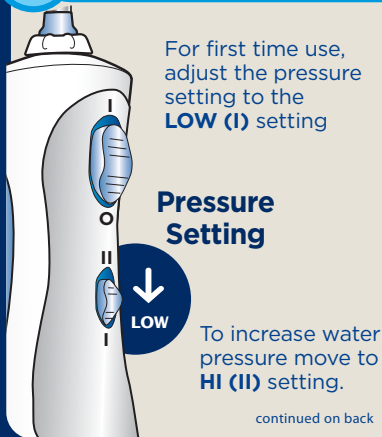
Lift the flip top on reservoir and fill with lukewarm water. Refill as needed.



4 Adjust Water Pressure:

For first time use, adjust the pressure setting to the **LOW (I)** setting

Pressure Setting

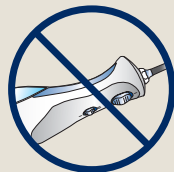
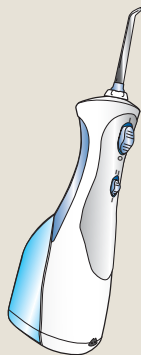
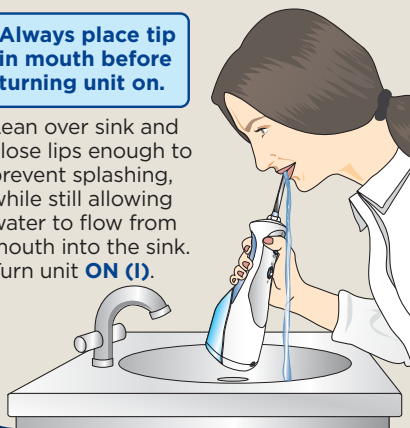


continued on back

5 On/Off Procedure:

Always place tip in mouth before turning unit on.

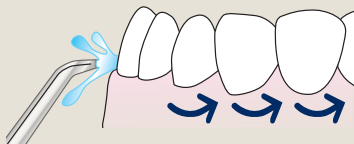
Lean over sink and close lips enough to prevent splashing, while still allowing water to flow from mouth into the sink. Turn unit **ON (I)**.



Keep unit upright during use to ensure continuous water flow.

6 Technique Tips for Best Results:

Aim the tip just above the gumline at a 90 degree angle.



Starting with the back teeth, follow the gumline and pause briefly between teeth.

Continue until all areas around and between teeth have been cleaned.

7

**REGISTER
YOUR
PRODUCT
ONLINE NOW!**

Receive up to
£45
in savings.

[www.waterpik.co.uk/
registration](http://www.waterpik.co.uk/registration)

For product questions and spare parts, please contact
Waterpik International customer services on: +44 (0) 844 335 6354

www.waterpik.co.uk
©2009 Water Pik, Inc.
FN20013324-F AA