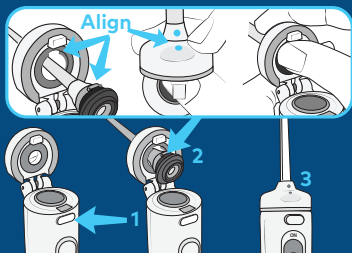


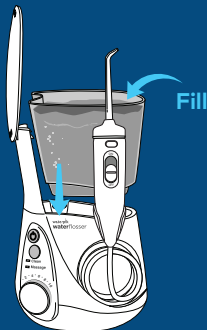
### QUICK START GUIDE

Model WF-05

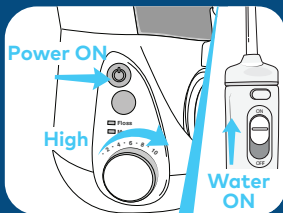
#### 1 Unit Prep (First time use only)



**A.** Press button to open flip top.<sup>1</sup> Insert tip through top, align notches on tip and handle (dots on tip and flip top will align), press firmly to click tip into place.<sup>2</sup> Close flip top.<sup>3</sup>



**B.** Fill reservoir with warm water and replace it firmly on the base.



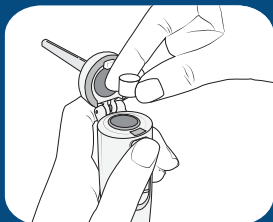
#### To Prime Unit

**C.** Turn pressure to high, point tip into sink, turn power and water switches ON until water flows. Turn power and water OFF.

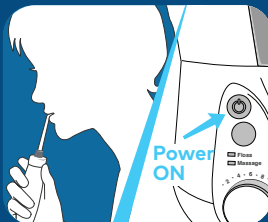
### QUICK START GUIDE

Model WF-05

#### 2 Water Floss



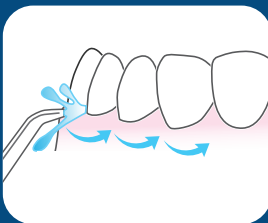
**A.** Load tablet into handle. Close flip top. Turn pressure to low.



**B.** With water switch in OFF position, place tip in mouth. Turn Power ON. Lean over sink.



**C.** Turn water switch to ON position. Close lips enough to prevent splashing, while still allowing water to flow from mouth into sink. Increase pressure to your liking.



**D.** Aim water at the gumline at a 90 degree angle. Follow the gumline and pause briefly between teeth.

**TO AVOID MESS: KEEP TIP IN MOUTH WHILE UNIT IS ON.**