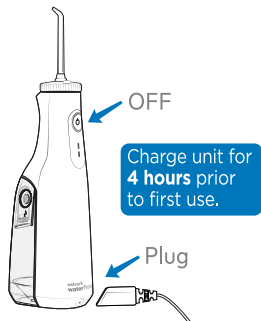


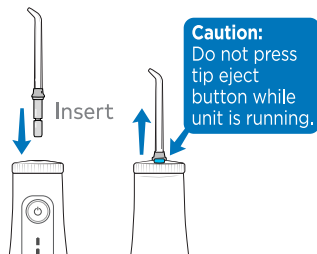
waterpik® waterflosser®

QUICK START GUIDE WF-10

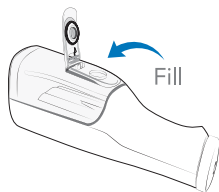
1 Unit Prep



Plug power cord into outlet and connect the charging cord to the unit.



Press tip firmly into unit until it clicks into place. To remove tip, push the tip eject button.

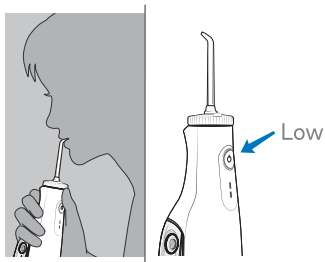


Disconnect charging cord from unit. Lift the flip top on reservoir and fill with warm water. Refill as needed.

waterpik® waterflosser®

QUICK START GUIDE WF-10

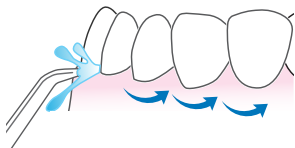
2 Water Floss



With unit **OFF**, place tip in mouth. Start on low pressure, by pressing the power button once. Press the Power button twice for high pressure.



Lean over sink. Close lips enough to prevent splashing. Keep unit upright during use to ensure continuous water flow.



Aim water at the gumline at a 90 degree angle. Follow the gumline and pause briefly between teeth.

TO AVOID MESS: KEEP TIP IN MOUTH WHILE UNIT IS ON.