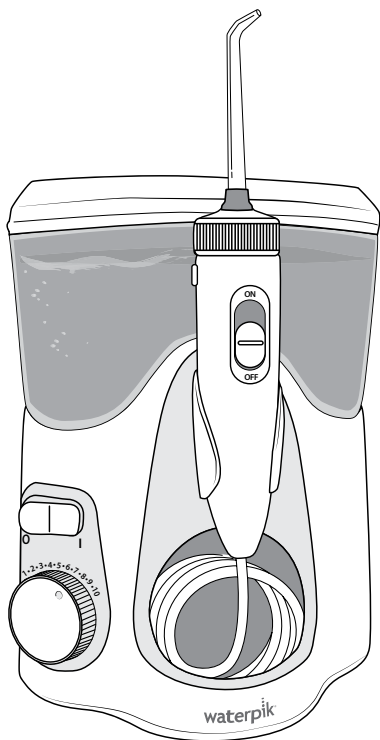


waterpik®

Waterpik® Water Flosser Model WP-150/152



.....
www.waterpik.com

TABLE OF CONTENTS

| | |
|-----------------------------------------------------------|---|
| Important Safeguards | 3 |
| Product Description | 5 |
| Getting Started | 6 |
| Cleaning and Troubleshooting Your Waterpik® Water Flosser | 8 |
| Limited Three-Year Warranty | 9 |

IMPORTANT SAFEGUARDS

When using electrical products, especially when children are present, basic safety precautions should always be followed, including the following:

READ ALL INSTRUCTIONS BEFORE USING.

DANGER:

To reduce the risk of electrocution:

- Always unplug product after using.
- Do not handle plug with wet hands.
- Do not place in or drop into water or other liquid.
- Do not use while bathing.
- Do not place or store product where it can fall or be pulled into a tub or sink.
- Do not reach for a product that has fallen into water. Unplug immediately.
- Check the power supply cord for damage before the first use and during the life of the product.

WARNING:

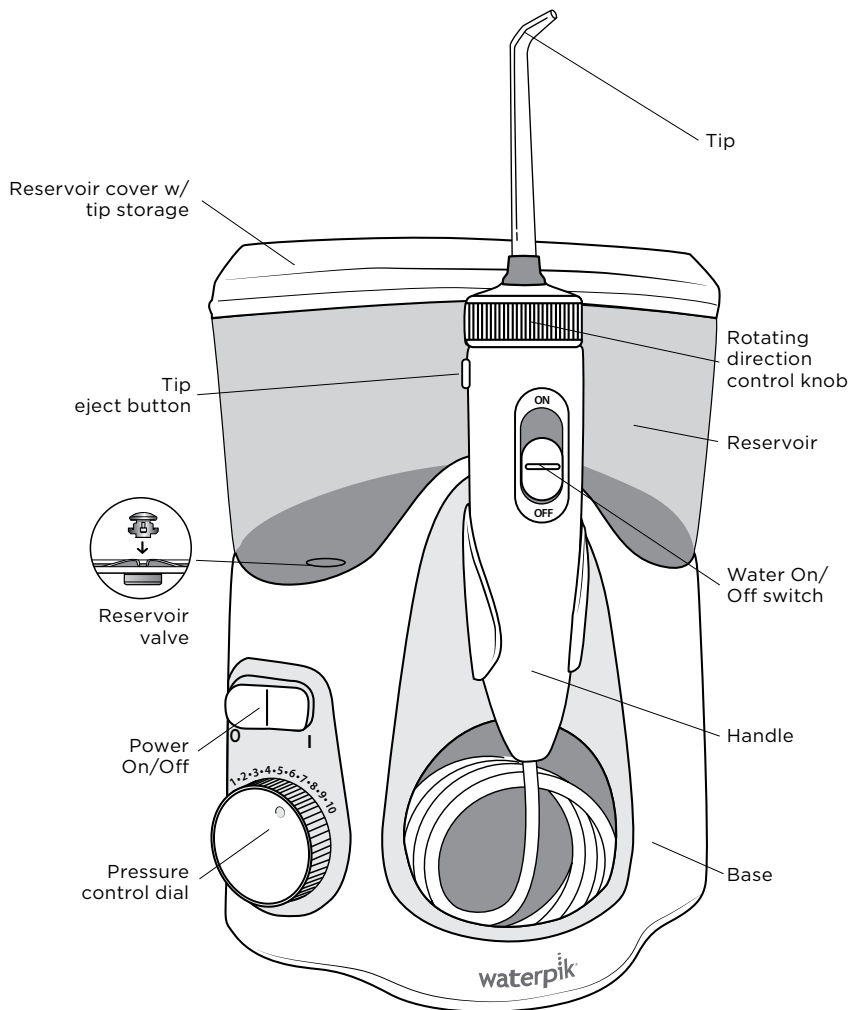
To reduce the risk of burns, electrocution, fire, or injury to persons:

- Do not plug this device into a voltage system that is different from the voltage system specified on the device or charger. **Use with improper voltage will damage product and VOID warranty.**
- If product is opened/disassembled for ANY reason, warranty is VOID.
- Do not use this product if it has a damaged cord or plug, if it is not working properly, if it has been dropped or damaged, or dropped into water. Contact Waterpik International, Inc. at +44 (0) 333 123 5677
- Do not direct water under the tongue, into the ear, nose or other delicate areas. This product is capable of producing pressures that may cause serious damage in these areas.
- Use this product only as indicated in these instructions or as recommended by your dental professional.
- Only use tips and accessories recommended by Water Pik, Inc.
- Do not drop or insert any foreign object into any opening or hose.
- Keep electrical cord away from heated surfaces.

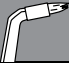



- Do not use outdoors or operate where aerosol (spray) products are being used or where oxygen is being administered.
- Do not use iodine or water insoluble concentrated essential oils in this product. Use of these can reduce performance and will shorten the life of the product.
- Fill reservoir with water or other dental professional recommended solution only.
- Remove any oral jewellery prior to use of this product.
- Do not use if you have an open wound on your tongue or in your mouth.
- If your physician or cardiologist has advised you to receive antibiotic premedication before dental procedures, you should consult your dentist before using this instrument or any other oral hygiene aid.
- Close supervision is necessary when this product is used by, on or near children or invalids.
- If the Pik Pocket® tip (not included in all models) separates from the shaft for any reason, discard tip and shaft and replace with new Pik Pocket® tip.
- Do not use this product for more than 5 minutes in each two-hour period.
- Fill reservoir with warm water or other dental professional recommended solution only.
- Children should be supervised to ensure that they do not play with the appliance.
- Closely instruct and supervise children 6 years and above and individuals with special needs in the proper use of this product.
- There are no consumer serviceable parts in this appliance and it does not require maintenance.

SAVE THESE INSTRUCTIONS

PRODUCT DESCRIPTION



GETTING STARTED

| Replace Every 3 Months | |
|-----------------------------------------------------------------------------------|-----------------------------------------------------------------------------------------------------------------------------------------------------------------------------------------------------------------------------------------|
| Orthodontic Tip | BEST FOR |
|  | <input checked="" type="checkbox"/> Braces <input checked="" type="checkbox"/> General Use |
| Pik Pocket® Tip | BEST FOR |
|  | <input checked="" type="checkbox"/> Periodontal Pockets <input checked="" type="checkbox"/> Furcations |
| Plaque Seeker® Tip | BEST FOR |
|  | <input checked="" type="checkbox"/> Implants <input checked="" type="checkbox"/> Retainers <input checked="" type="checkbox"/> Crowns <input checked="" type="checkbox"/> General Use <input checked="" type="checkbox"/> Bridges |
| Toothbrush Tip | BEST FOR |
|  | <input checked="" type="checkbox"/> General Use |

| Replace Every 6 Months | |
|-----------------------------------------------------------------------------------|----------------------------------------------------|
| Classic Jet Tip | BEST FOR |
|  | <input checked="" type="checkbox"/> General Use |
| Tongue Cleaner | BEST FOR |
|  | <input checked="" type="checkbox"/> Fresher Breath |

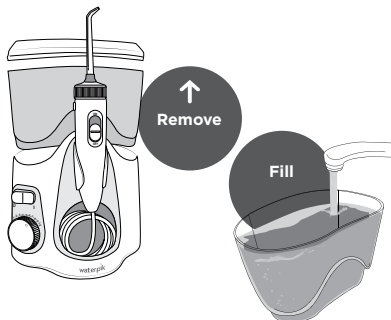
NOTE: All tips not included in all models. Replacement tips/attachments may be purchased directly from Waterpik International, Inc. +44 (0) 333 123 5677 or from your local Water Pik stockist.

Powering the Unit

Plug the cord into an electrical outlet. If the outlet is controlled by a wall switch, be sure it is turned on.

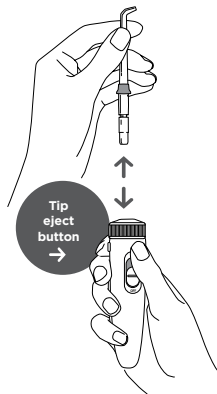
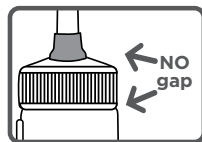
Preparing the Reservoir

Lift the reservoir lid, remove the reservoir, and fill with lukewarm water. Replace the reservoir over the base and **press down firmly** and close the lid.



Inserting and Removing Tips

Insert tip into the center of the Water Flosser handle, pressing down firmly until the tip clicks into place. The colored ring will be flush with the top of the handle if the tip is correctly locked into place. To remove tip from the handle push the tip eject button on the handle.



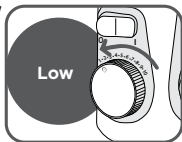
Prime Unit (First Time Use Only)

Set pressure control dial on base to high (pressure setting No.10), point the handle and tip into sink. Turn power and water ON until water flows from the tip. Turn unit OFF.



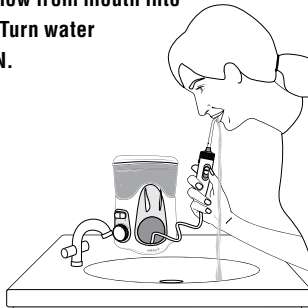
Adjusting the Pressure Setting

Turn the pressure control dial on the base of the unit to the lowest setting (pressure setting No.1) for first-time use. Gradually increase pressure over time to the setting you prefer – or as instructed by your dental professional.



Using the Water Flosser

Always place the tip in your mouth before turning the water ON. With water switch on handle in OFF position, turn power on. **Lean over sink and slightly close lips enough to prevent splashing while still allowing water to flow from mouth into the sink.** Turn water switch ON.



When finished, turn water switch and power OFF.

During use you can stop the flow of water by sliding the water switch on handle to the OFF position.



NOTE: Motor will continue to run.

Recommended Technique

For best results, start with back teeth and work toward the front teeth. Direct the stream at a 90-degree angle to your gumline with tip in mouth. Glide tip along gumline and pause briefly between teeth. Continue until you have cleaned the inside and outside of both the upper and lower teeth.



When Finished

Turn the unit off. Empty any liquid left in the reservoir.

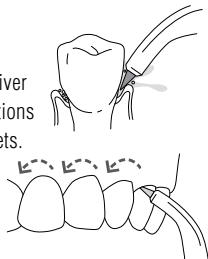
Note: If you used mouthwash or other solution besides water, see "Using Mouthwash and Other Solutions" section.

TIP USAGE**Pik Pocket® Tip**

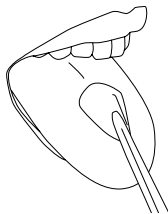
The Pik Pocket® Tip is specifically designed to deliver water or anti-bacterial solutions deep into periodontal pockets.

To use the Pik Pocket® Tip, **set the unit to the lowest pressure setting.**

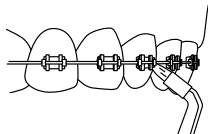
Place the soft tip against a tooth at a 45-degree angle and gently place the tip under the gumline, into the pocket. Turn the unit on and continue tracing along the gumline.

**Tongue Cleaner Tip**

To use the tongue cleaner tip, set to lowest pressure setting, place tip in the center/middle of your tongue about half way back and start the Water Flosser. Pull forward with light pressure. Increase pressure as you prefer.

**Orthodontic Tip**

To use the Orthodontic Tip, gently glide tip along gumline, pausing briefly to lightly brush area between teeth and all around orthodontic bracket, before proceeding to the next tooth.

**Toothbrush Tip**

Place the toothbrush tip in mouth with the brush head on the tooth at the gum line. The toothbrush tip can be used with or without toothpaste. Turn the Water Flosser on so water flows through the tip. Using a **light pressure** (bristles



should not bend) massage the brush back and forth with very short strokes – much like you would with a manual toothbrush.

Plaque Seeker® Tip

To use the Plaque Seeker® Tip, place the tip close to the teeth so that the

bristles are gently touching the teeth. Gently glide tip along gumline, pausing briefly between teeth to gently brush and allow the water to flow between the teeth.

**Using Mouthwash and Other Solutions**

Your Waterpik® Water Flosser can be used to deliver mouthwash and antibacterial solutions. After using any special solution, rinse unit to prevent clogging by partially filling reservoir with warm water and running unit with tip pointed into sink until unit is empty.

Cleaning

Before cleaning, unplug from the electrical outlet. Clean the product when necessary by using a soft cloth and mild non-abrasive cleanser.

The water reservoir is removable for easy cleaning and is top rack dishwasher safe.

NOTE: Remove reservoir valve by pushing up from bottom of reservoir, before placing reservoir in dishwasher.

**Remove****Replace**

Removing Hard Water Deposits/ General Cleaning

Hard water deposits may build up in your unit, depending on the mineral content of your water. If left unattended, it can hinder performance.

Cleaning internal parts: add 2 tablespoons of white vinegar to a full reservoir of warm water. Point the handle and tip into sink. Turn unit ON and run until reservoir is empty. Rinse by repeating with a full reservoir of clean warm water.

This process should be done every 1 to 3 months to ensure optimal performance.

Leakage

If leaking due to a damaged hose, contact Waterpik International, Inc. UK Customer Service Centre at +44 (0) 333 123 5677 for a self service repair kit. If leakage occurs from the reservoir, ensure the valve is right side up or contact Waterpik International, Inc. UK Customer Service Centre for a replacement valve.



Service Maintenance

Waterpik® Water Flossers have no consumer serviceable electrical items and do not require routine service maintenance. For all your service needs please call the Waterpik International, Inc. UK Customer Service Centre at +44 (0) 333 123 5677. Some replacement parts and accessories for the Water Flosser are also available at www.waterpik.co.uk. For questions or problems please call the customer service centre before returning the product. Please do not send your unit to the Waterpik International, Inc. address as this can cause lengthy delays. Refer to the serial and model numbers in all correspondence. These numbers are located on the bottom of your unit. Still have questions? Go to www.waterpik.co.uk.

Water Pik, Inc. warrants to the original consumer of this new product that it is free from defects in materials and workmanship for 3 years from the date of purchase. **Consumer will be required to submit the original purchase receipt as proof of purchase date and if requested, the entire product, to support a warranty claim.** Water Pik, Inc. will replace the product, at its discretion, provided the product has not been abused, misused, altered, or damaged after purchase, was used according to instructions, and was only used with accessories or consumable parts approved by Water Pik, Inc.

This limited warranty excludes accessories or consumable parts such as tips, etc. **Use with improper voltage will damage product and VOID warranty.**

This warranty gives you specific legal rights. You may also have other rights that vary, depending on the law in your place of residence.



Water Pik, Inc.

1730 East Prospect Road
Fort Collins, CO 80553-0001 USA
www.waterpik.com

Waterpik, International, Inc.

Castle Court, 41 London Road
Reigate, Surrey RH2 9RJ
United Kingdom
www.waterpik.co.uk

Waterpik® is a trademark of Water Pik, Inc. registered in Argentina, Australia, Benelux, Brazil, Canada, Chile, China, Czech Republic, Denmark, EU, Finland, France, Germany, Hong Kong, Hungary, India, Israel, Italy, Japan, Kazakhstan, Korea, Malaysia, Mexico, New Zealand, Norway, Pakistan, Philippines, Poland, Russian Federation, Saudi Arabia, Singapore, South Africa, Spain, Sweden, Switzerland, Taiwan, Turkey, Ukraine, United Kingdom, United States and Vietnam.

Waterpik® (stylised) is a trademark of Water Pik, Inc. registered in Australia, Brazil, Canada, China, EU, Hong Kong, India, Israel, Japan, Korea, Malaysia, Mexico, Philippines, Russian Federation, Saudi Arabia, South Africa, Switzerland, Taiwan, Thailand, Trinidad & Tobago, Ukraine, United States, and Vietnam.

Plaque Seeker® is a trademark of Water Pik, Inc. registered in Canada, China, EU, and the United States.

Pik Pocket® is a trademark of Water Pik, Inc. registered in Canada and the United States.

Waterflosser® (stylised) is a trademark of Water Pik, Inc. registered in Brazil, Canada, China, Mexico, Switzerland and the United States.

Designed and tested in the USA. Made in China.